

40-450 Watt

High efficiency monocrystalline silicon solar modules

0~+3% tolerance

ISO9001:2008, ISO14001:2004, OHSAS18001

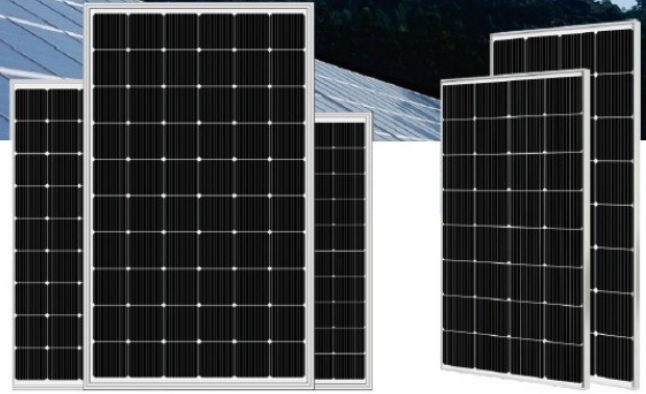
Factory certificates

IEC61215, IEC61730, UL1703 Product certificates



TRISOL[®] PERC 182 Cell 450W

SP450M-60



Solar module features



PERC 182 cells

Better capability of current collection, larger area of power generation, nice appearance, more suitable for installation on the roof.



High output power

Using PERC battery structure technology (Low resistance characteristics), output power of 60pcs monocrystalline cells reaches Max 450W (Highest Conversion efficiency to 20.9%)



Low light performance

Using excellent glass and texture surface making of solar cell, outstanding performance can be obtained in low light condition.

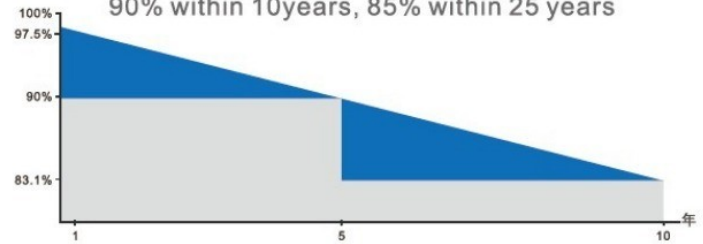


Adaptability of harsh environment

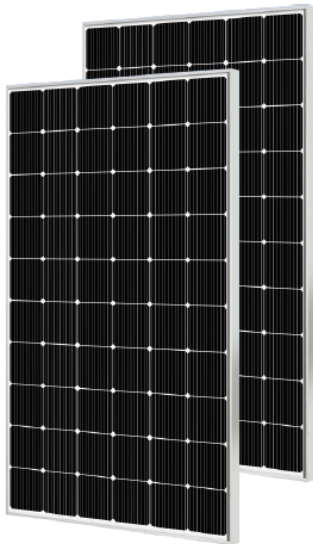
Corrosion tests have certified in high salt fog and high ammonia environment.

Guaranteed output power

90% within 10 years, 85% within 25 years



Module Picture



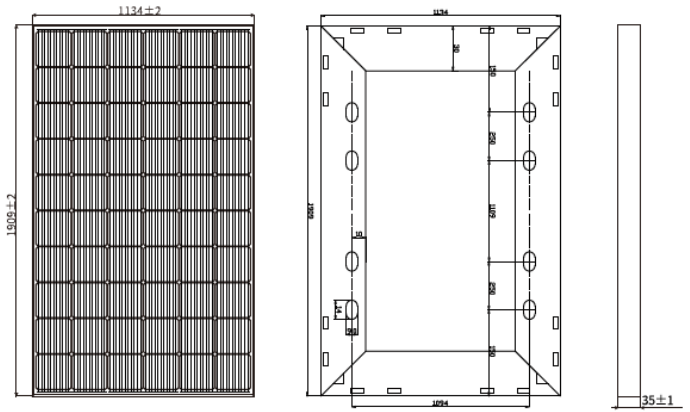
SP450M-60

Comprehensive Certificates

- IEC61215, IEC61730
- ISO9001:2015 Quality management systems
- ISO45001: Environmental management systems
- ISO45001:2018 Occupational health and safety management systems



Mechanical Diagrams



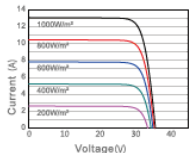
PS: Frame color and cable length can be customized

Electrical Parameters at (STC)

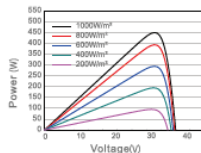
Module	Power (W)	Module Efficiency(%)	Voltage at Pmax(Vmp)	Current at Pmax(Imp)	Open Circuit Voltage(Voc)	Short Circuit Current(Isc)	Power Tolerance(w)
SP450M	450W	20.80%	34.20	13.16	41.04	13.95	±3%

Characteristics

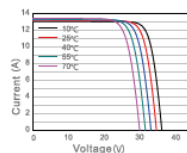
Current Voltage Curve SP450M/60



Power Voltage Curve SP450M/60



Current Voltage Curve SP450M/60



Mechanical Parameters

Solar Cell (Type/Size)	MONO(182mm)
Solar Cells Number	60Pcs(6x10)
Dimension	1909x1134x35mm
Weight	22.9Kg/Pcs
Tempered Glass	3.2 mm High Permeability Coated
Frame	Anodized aluminum alloy
Junction Box	IP67, 3* bypass diode
Cable	4.0mm², (+)1000mm/(-)1000mm
Connector	Original MC4/Compatible MC4
Mechanical Load	Front 5400PA/back 2400PA

Packing

Module Type	SP450M-60
Carton Size	1930x1160x85mm
Number	2Pcs/Ctn
Weight	46Kg/Ctn
Volume	0.190Cbm/Ctn
20GP Container	316Pcs
40HQ Container	736Pcs

STC: ☀️ Light intensity 1000W/m² 🔋 Battery temperature: 25°C 🌤️ atmosphere quality=15

NOCT: ☀️ Light intensity 800W/m² 🔋 Battery temperature: 20°C 🌤️ atmosphere quality=15 🌬️ wind velocity 1m/s